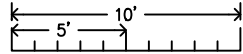


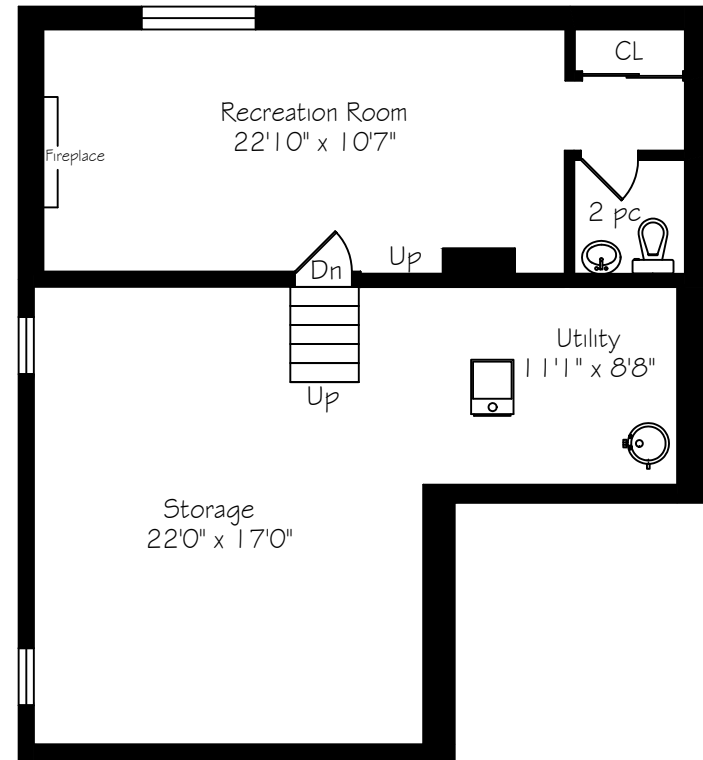
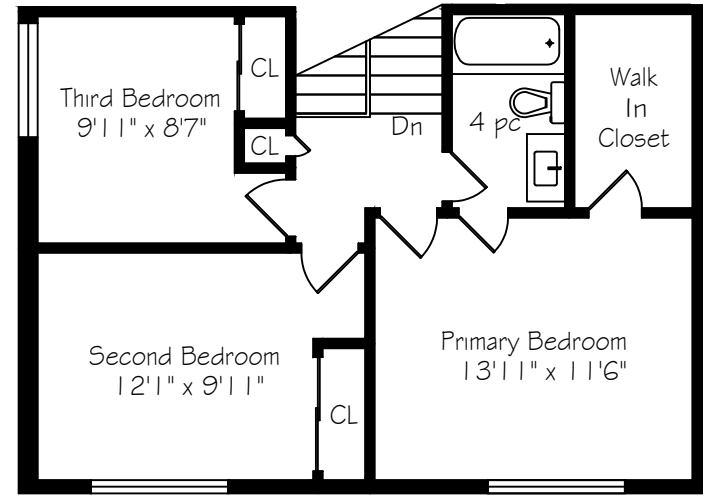
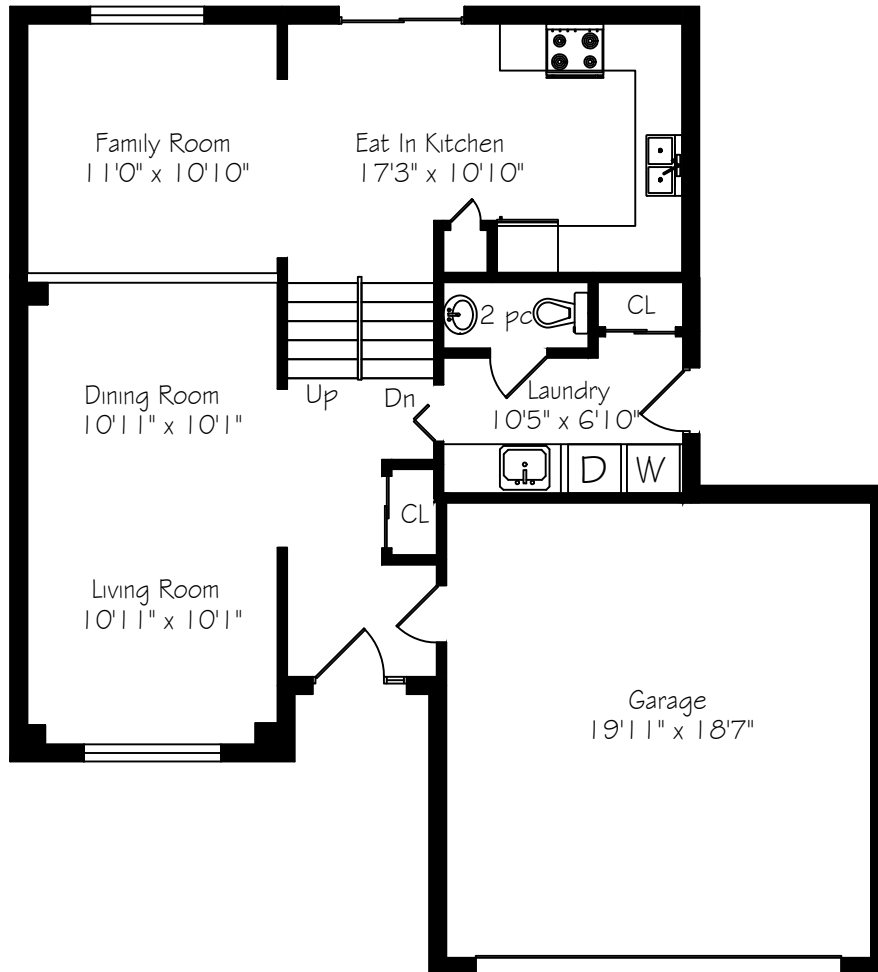
556 Marcellus Avenue



Main Floor - 851 Square Feet
 Second Floor - 644 Square Feet
 Lower Level - 871 Square Feet
 Total - 2366 Square Feet

Measurements and Calculations are approximate
 To be used as guidelines only
 www.measuredup.ca

Prepared for The Brazeau Team
 ROYAL LePAGE Meadowtowne Realty



556 Marcellus Avenue Metric Conversions



www.measuredup.ca

416-985-9859

Measurements and Calculations are approximate
To be used as guidelines only

	IMPERIAL			METRIC				
Main Floor	851	sf		79	sqm		Ceiling Height	8'0"
Kitchen	17'	3"	x 10' 10"	5.26	x	3.30		
Family Room	11'	0"	x 10' 10"	3.35	x	3.30		
Dining Room	10'	11"	x 10' 1"	3.33	x	3.07		
Living Room	10'	11"	x 10' 1"	3.33	x	3.07		
Second Floor	644	sf		60	sqm		Ceiling Height	7'6"
Primary Bedroom	13'	11"	x 11' 7"	4.24	x	3.53		
Second Bedroom	12'	1"	x 9' 11"	3.68	x	3.02		
Third Bedroom	9'	11"	x 8' 7"	3.02	x	2.62		
Lower Level	871	sf		81	sqm		Ceiling Height	7'6"
Recreation Room	22'	10"	x 10' 7"	6.96	x	3.23		
Utility Room	11'	1"	x 8' 8"	3.38	x	2.64		
Storage	22'	0"	x 17' 0"	6.71	x	5.18		
Total Above Grade	1495	sf		139	sqm			
Total Square Footage	2366	sf		220	sqm			March 16, 2021